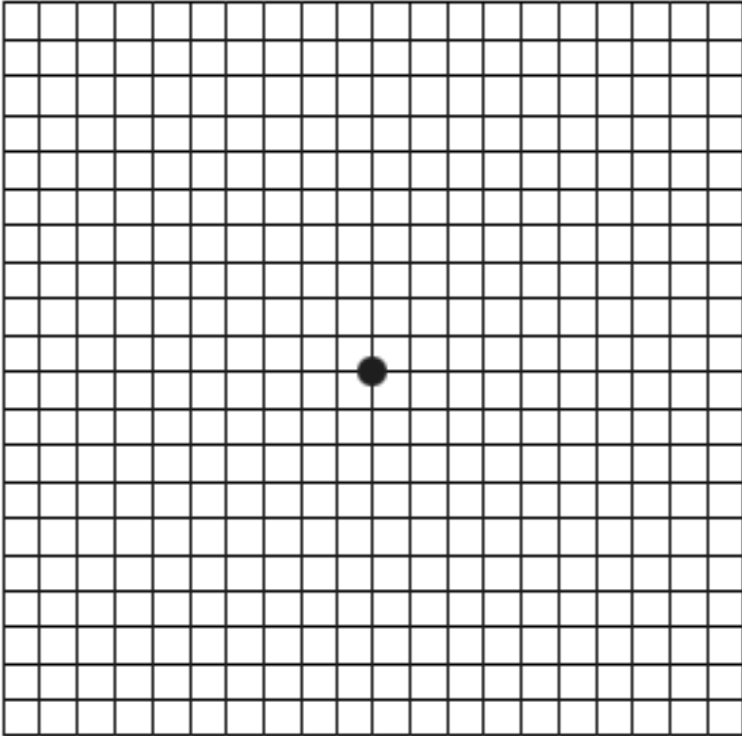




SKYVISION CENTERS

2237 Crocker Road . Suite 100 . Westlake, Ohio 44145 . (440) 892-3931



Amsler Grid

1. Test each eye separately.
2. Do the test in an evenly lit room wearing the glasses you use for reading.
3. The Amsler Grid test should be performed at comfortable reading distance away from your open eye, usually about 12-14 inches.
4. Cover one eye completely.
5. With your open eye, look at the dot at the center of the Amsler Grid.
6. Use a pencil to mark any areas where the grid lines are wavy, crooked or missing.

If you notice any changes in your grid, notify our office immediately.